

www.eBibleProductions.com



**Produced and Edited by Ray and Ruth
Hamilton P.O. Box 513 Caldwell Id.
83606**

A close-up photograph of a cluster of purple flowers, likely azaleas, with prominent stamens. The flowers are in various stages of bloom, showing the intricate details of the petals and reproductive parts. The background is a dark, out-of-focus green, suggesting foliage.

email raybse@cableone.net



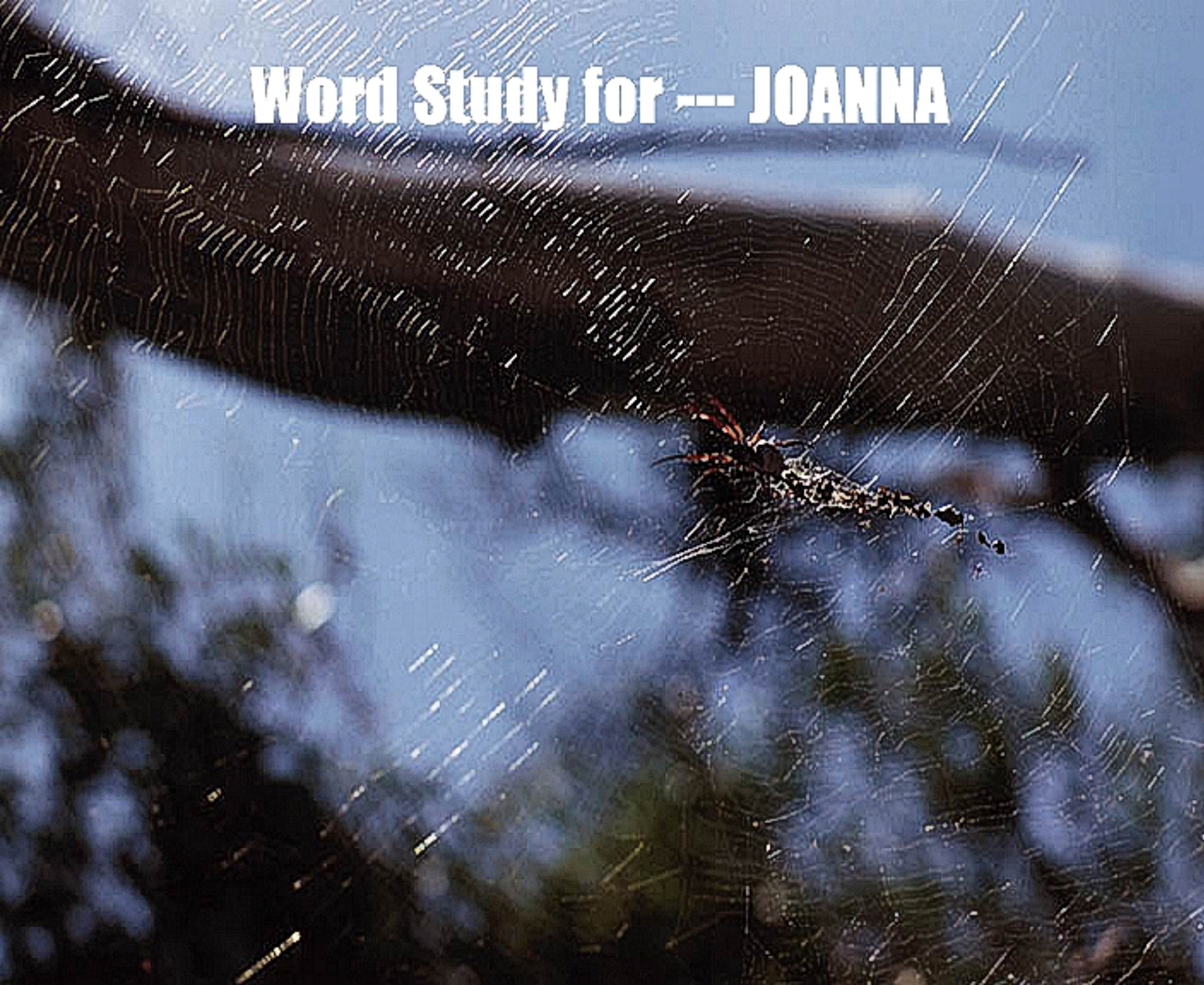
Copyright (c) 2004



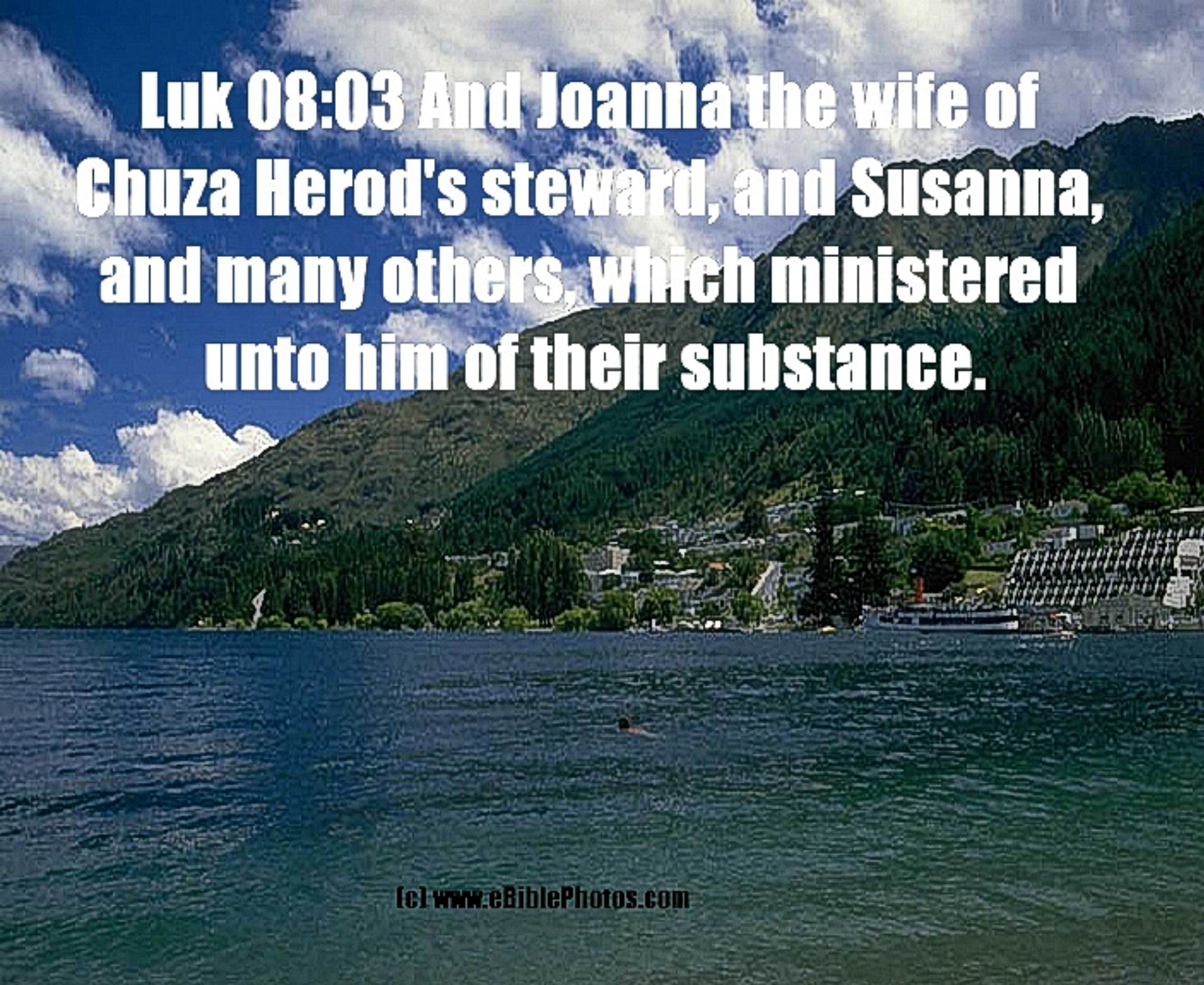


**Recordings by Willard Waggoner (c) 1996 Praise Inc.
P. O. Box 1377 Caldwell Idaho 83606-1377 www.praiseinc.org**

Word Study for --- JOANNA



**Luk 03:27 Which was [the son] of
Joanna, which was [the son] of Rhesa,
which was [the son] of Zerobabel,
which was [the son] of Salathiel,
which was [the son] of Neri,**

A scenic view of a lake with a town and mountains in the background. The sky is blue with white clouds. The text is overlaid on the top half of the image.

**Luk 08:03 And Joanna the wife of
Chuza Herod's steward, and Susanna,
and many others, which ministered
unto him of their substance.**

**Luk 24:10 It was Mary Magdalene, and
Joanna, and Mary [the mother] of
James, and other [women that were]
with them, which told these things
unto the apostles.**